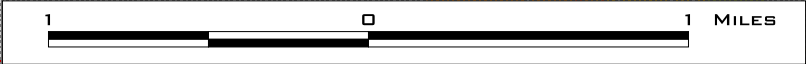
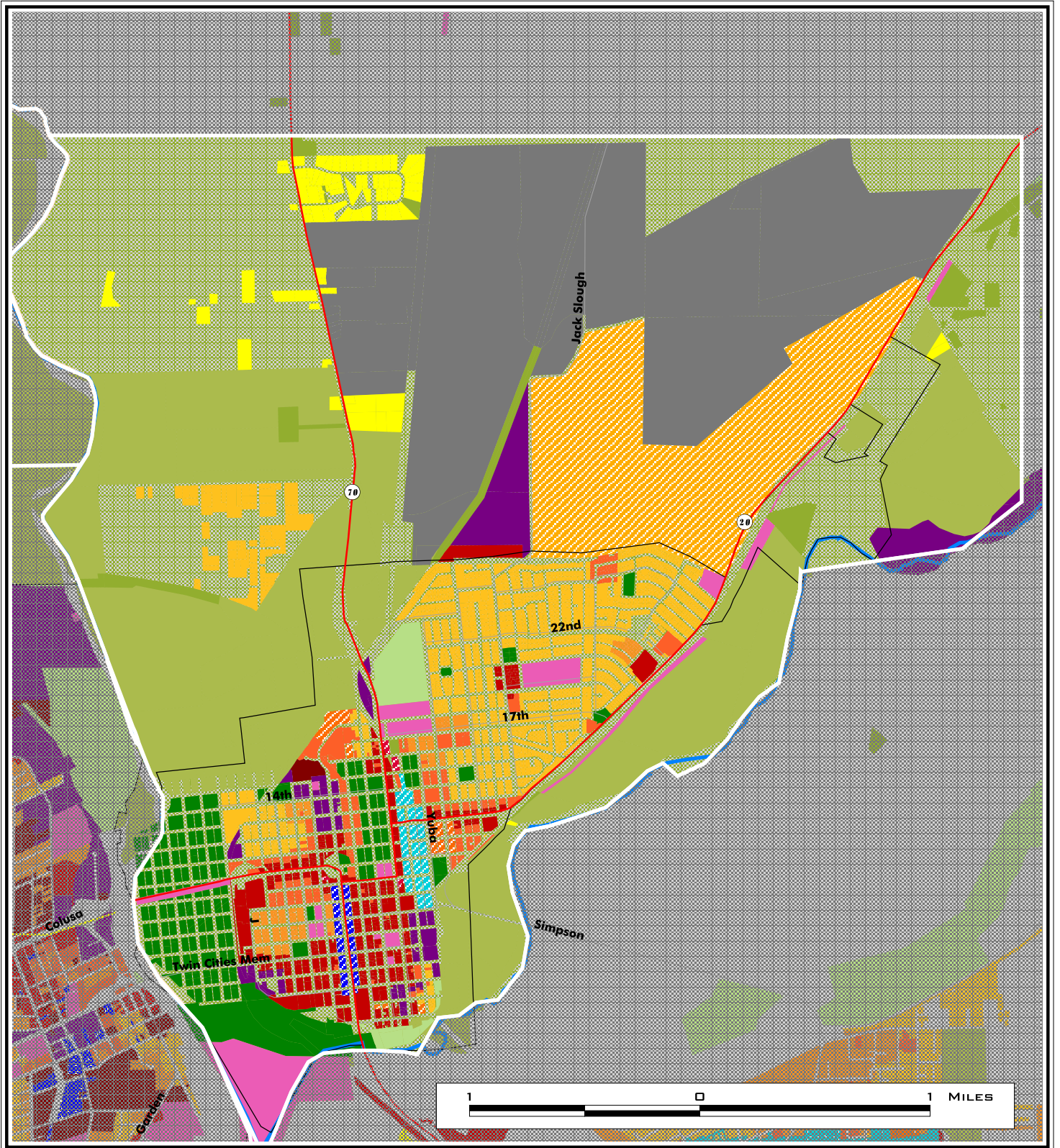


MARYSVILLE



RESIDENTIAL "BUILDING" TYPES

- Rural Residential
- Single Family Large Lot
- Single Family Small Lot
- Attached Residential

EMPLOYMENT "BUILDING" TYPES

- Retail
- Office
- Industrial
- Public

NON-URBAN "LAND USE" TYPES

- Agriculture
- Forest
- Open Space
- Parks
- Water

RESIDENTIAL "PLACE" TYPES

- Medium Density Mixed Residential
- High Density Mixed Residential

MIXED-USE "PLACE" TYPES

- Low Density Mixed-use Center or Corridor
- Medium Density Mixed-use Center or Corridor
- High Density Mixed-use Center or Corridor
- Employment Focus Mixed-use Center or Corridor

Vacant Urban Designated Lands (2050)

Vacant Rural Residential Lands (2050)